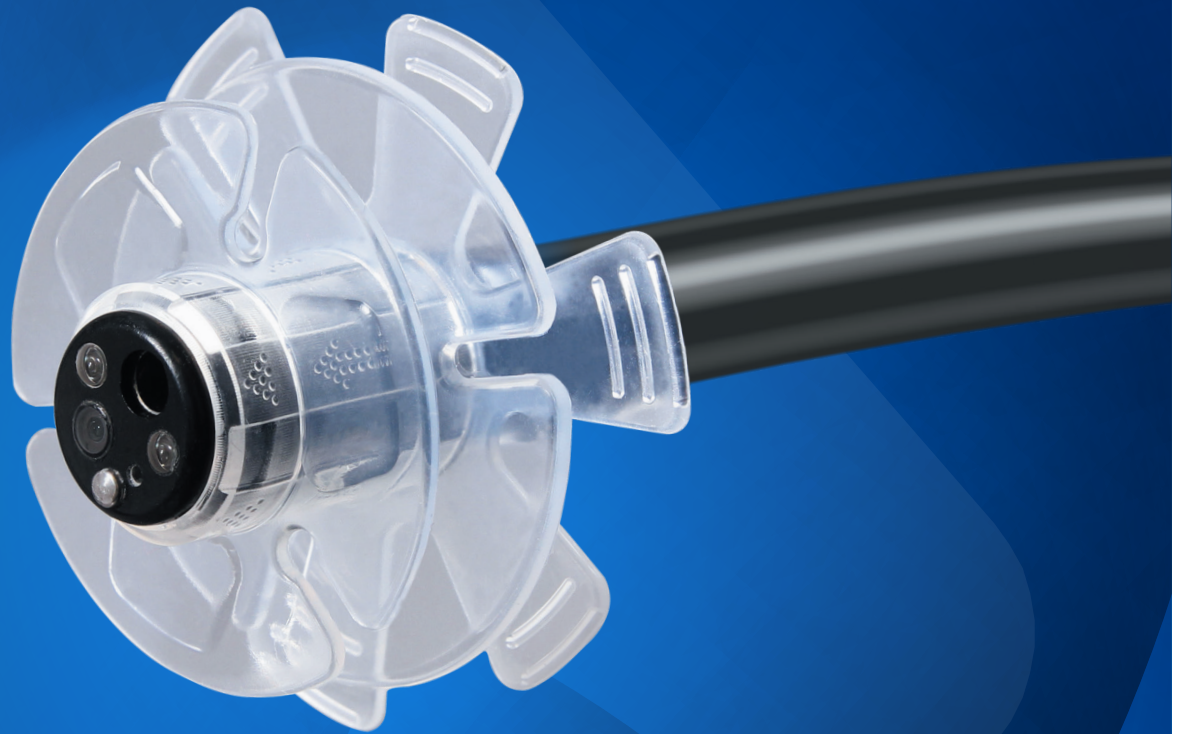


# EndoRings™

## Distal Attachment



- Improve your adenoma detection rate without changing your technique
- Compatible with the leading colonoscopes

**ENDO**AID  
It's in the Rings

## The EndoRings™ device features...

- 3 layers of flexible, soft circular rings – gently flatten folds during withdrawal for improved visibility.
- Up to 50mm diameter – provides scope centering and stability of the endoscope during withdrawal and endoscopic therapy.



## The EndoRings™ device easily attaches to the distal end of adult and slim colonoscopes to provide:



Improved visibility



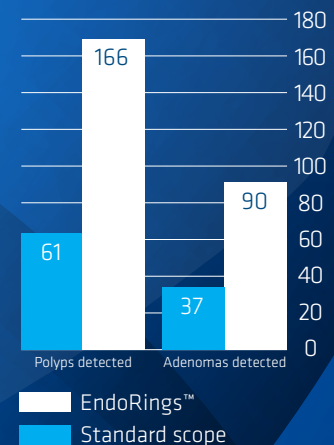
Scope centering during screening



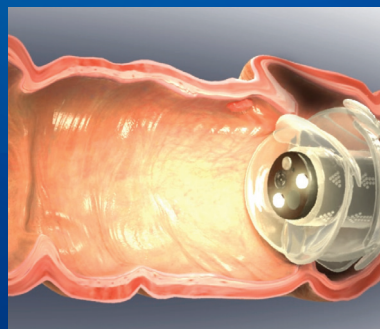
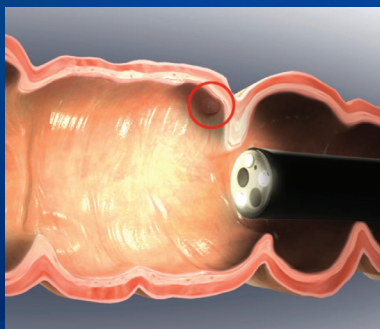
Anchoring during endoscopic therapy

*Drs. Peter Siersema, Doug Rex, Ian Gralnek, Ori Segol, Vincent Dik, Alain Suissa, and Leon Moons performed a randomized, prospective tandem study comparing the EndoRings to standard colonoscopy in the Netherlands, the United States, and Israel.*

*In 126 patients, the Adenoma Detection Rate was 51% with the EndoRings versus 29% with a standard colonoscope. The number of polyps and adenomas detected by the EndoRings was more than twice that of standard colonoscopy.*



### Gentle smoothing of colon folds allows for improved visibility!



**ENDO AID**  
It's in the Rings

[www.endo-aid.com](http://www.endo-aid.com)